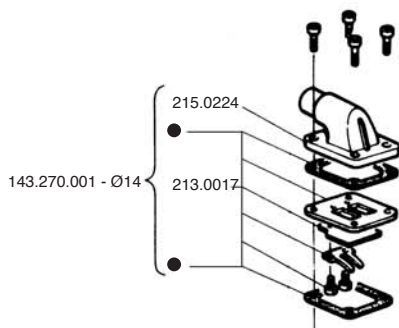


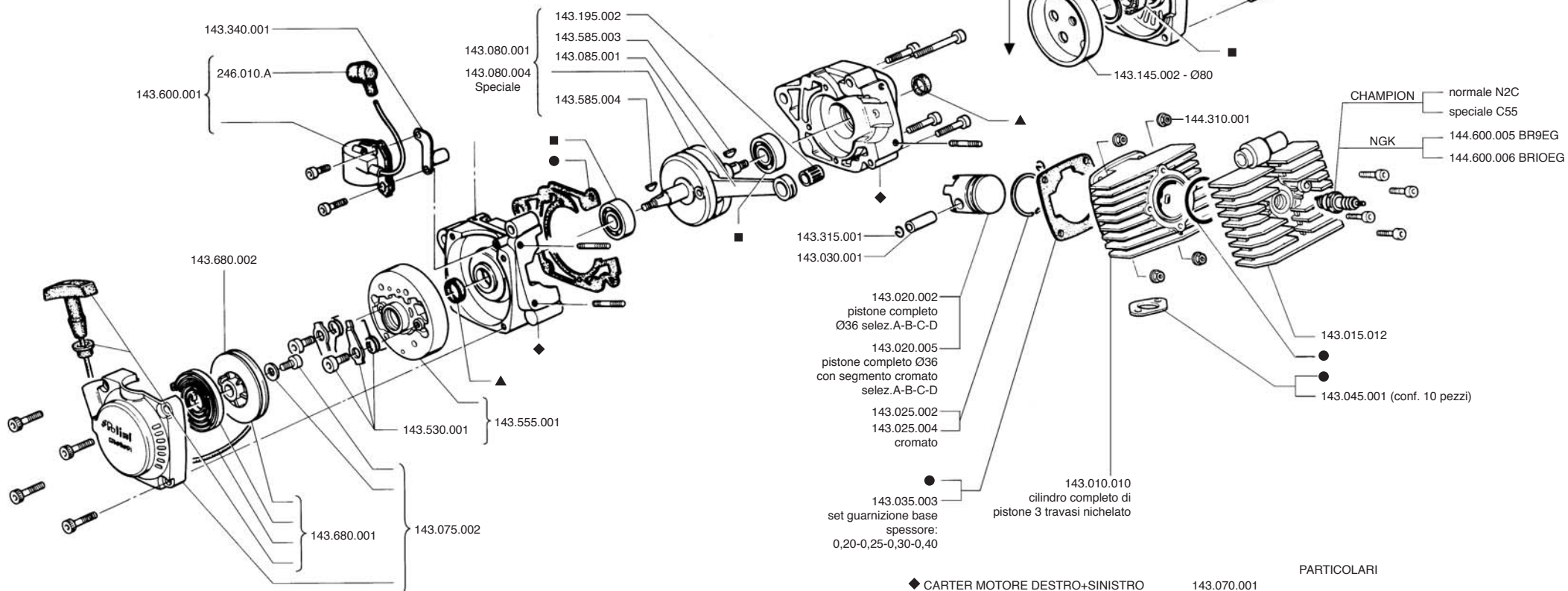
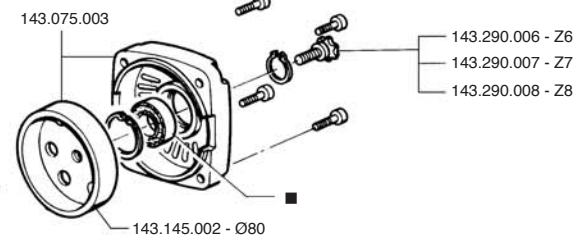
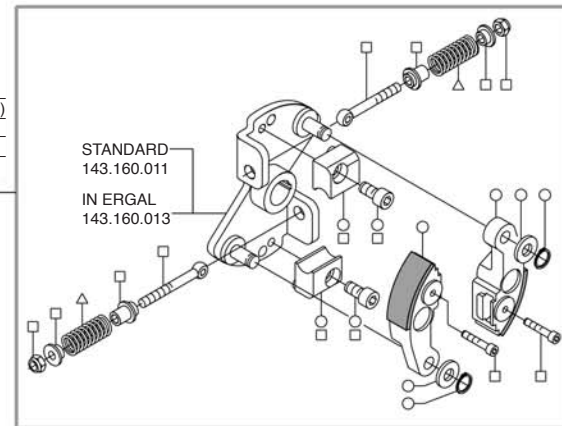
MOTORE MINIBIKE MOD. BASE - SCOOTERINO Air HP 4,2



143.270.014 - Ø14
(solo sui modelli Steel)



- Cod. 143.160.009 frizione completa
- △ Cod. 143.255.001 set molle (Ø filo: 1,6 - 2,3 - 2,3)
- Cod. 143.705.008 - Cod. 143.705.014 Racing
- Cod. 143.705.009



- CHAMPION
 - normale N2C
 - speciale C55
- NGK
 - 144.600.005 BR9EG
 - 144.600.006 BR10EG

- ◆ CARTER MOTORE DESTRO+SINISTRO
- SERIE CUSCINETTI
- ▲ SERIE PARAOLI BASAMENTO
- SERIE GUARNIZIONI

- | | | |
|-------------|----------------------------|-------------|
| 143.070.001 | PARTICOLARI | |
| 143.190.001 | SERIE VITI E DADI MOTORE | 143.305.002 |
| 143.065.001 | SERIE ESTRATTORI MOTORE | 143.695.000 |
| 143.034.001 | COLLETTORE LAMEL. 4 PETALI | 143.270.003 |